



# INDOFINE Chemical Company, Inc.

121 Stryker Lane, Bldg. 30, Suite 1 • Hillsborough, NJ 08844 • U.S.A.

Phone: (908) 359-6778 • FAX: (908) 359-1179

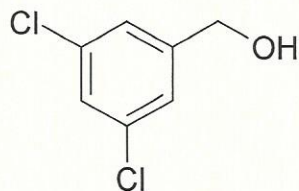
website: [www.indofinechemical.com](http://www.indofinechemical.com)

e-mail: [chemical@indofinechemical.com](mailto:chemical@indofinechemical.com)

## CERTIFICATE OF ANALYSIS

Cat No.: CS-285

<u>Product:</u>	<b>3,5-DICHLOROBENZYL ALCOHOL</b>
<u>Cas Number:</u>	[60211-57-6]
<u>Lot Number:</u>	0905030
<u>Chemical Formula:</u>	C <sub>7</sub> H <sub>6</sub> Cl <sub>2</sub> O
<u>Molecular Weight:</u>	177.03
<u>Melting Point:</u>	80-82°C
<u>Appearance:</u>	Off white crystalline powder
<u>Solubility:</u>	Soluble in Chloroform
<u>Storage:</u>	Cool dry place
<u>Assay (HPLC):</u>	99.0%





# INDOFINE Chemical Company, Inc.

121 Stryker Lane, Bldg. 30, Suite 1 • Hillsborough, NJ 08844 • U.S.A.

Phone: (908) 359-6778 • FAX: (908) 359-1179

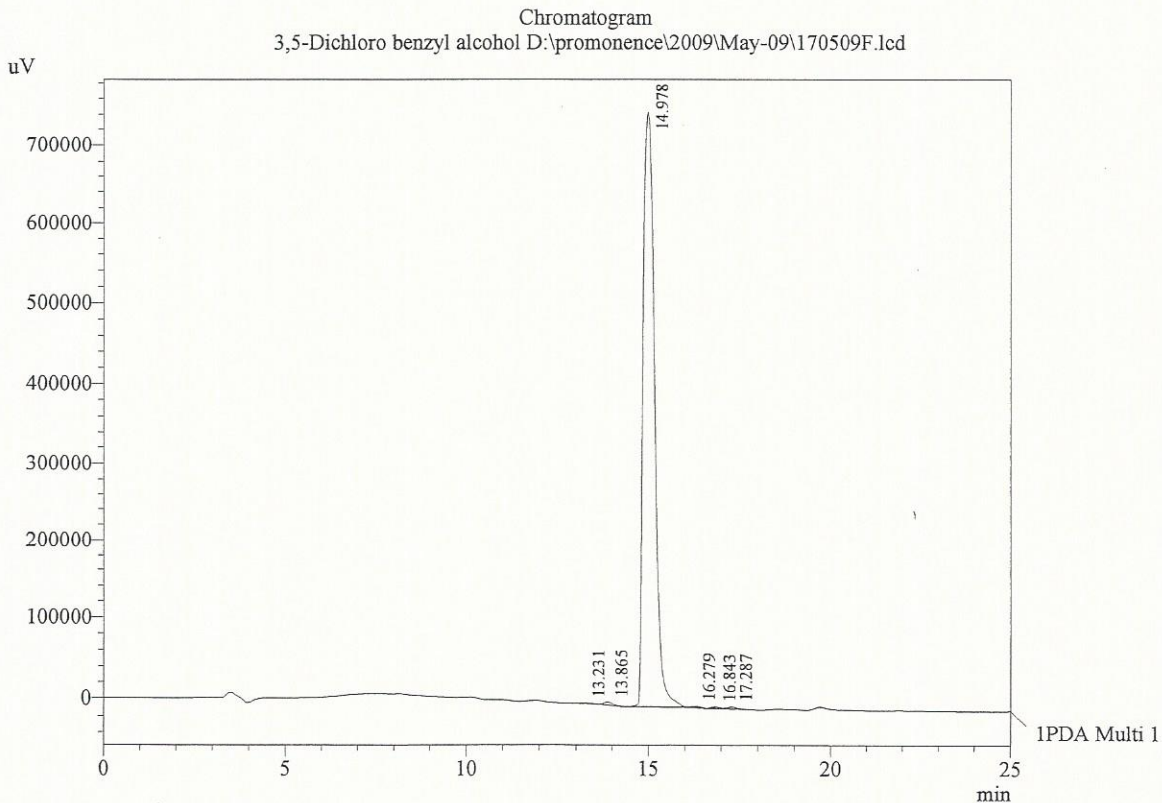
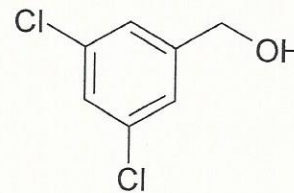
website: [www.indofinechemical.com](http://www.indofinechemical.com)

e-mail: [chemical@indofinechemical.com](mailto:chemical@indofinechemical.com)

Cat. No.: CS-285  
Product: 3,5-Dichloro benzyl alcohol  
Lot No.: 0905030

Date Acquired : 5/17/2009 3:51:23 PM  
Acquired by : Ramana  
Sample Name : 3,5-Dichloro benzyl alcohol  
Sample ID : Indofine (Lot No.0905030)  
Injection Volume : 20 uL  
Data Filename : 170509F.lcd  
Method Filename : Linear Gradient.M.lcm

Description:  
Column : Inertsil C-18, 250X4.6mm 5.0µm  
Flow : 1.000mL/min.  
Mobile Phase : A(Water 0.05% TFA) : B(ACN)  
00.01 : 90 : 10  
12.00 : 10 : 90  
20.00 : 10 : 90  
23.00 : 90 : 10



1 PDA Multi 1 / 230nm 4nm

PeakTable  
Ch1 230nm 4nm

Peak#	Ret. Time	Area	Height	Area %
1	13.231	23227	956	0.140
2	13.865	58413	3503	0.353
3	14.978	16405036	752148	99.004
4	16.279	27211	1533	0.164
5	16.843	22153	1501	0.134
6	17.287	34036	1878	0.205
Total		16570074	761520	100.000